

# Join SIAM in Boston

## SIAM Conference on Analysis of Partial Differential Equations

**Boston Park Plaza Hotel  
Boston, Massachusetts**

**July 10-12, 2006**

### THEMES

Biological and Medical Modeling  
Conservation Laws  
Free Boundary Problems  
Geometric Methods  
Homogenization  
Imaging Processes  
Kinetic Methods  
Mechanics of Compressible and Incompressible Fluids  
Stochastic PDE  
Variational Methods

### INVITED PRESENTATIONS

#### Higher Order PDEs: Analysis and Applications

Andrea Bertozzi

University of California, Los Angeles

(Joint Speaker with the 2006 SIAM Annual Meeting)

#### Shock Reflection and Free Boundary Problems

Mikhail Feldman, University of Wisconsin, Madison

#### Multidimensional Conservation Laws

Barbara Lee Keyfitz

Fields Institute, Canada, and University of Houston

(Joint Speaker with the 2006 SIAM Annual Meeting)

#### Energy-Driven Pattern Formation

Robert Kohn, Courant Institute, New York University

#### Shock Wave Theory, History and Possible Future

Tai-Ping Liu, Stanford University

#### Critical Thresholds in Eulerian Dynamics

Eitan Tadmor, University of Maryland, College Park



### ORGANIZING COMMITTEE

Gui-Qiang Chen, *Co-chair*, Northwestern University

Irene Fonseca, *Co-chair*, Carnegie Mellon University

Stuart Antman, University of Maryland, College Park

Maria-Carme Calderer, University of Minnesota

David Kinderlehrer, Carnegie Mellon University

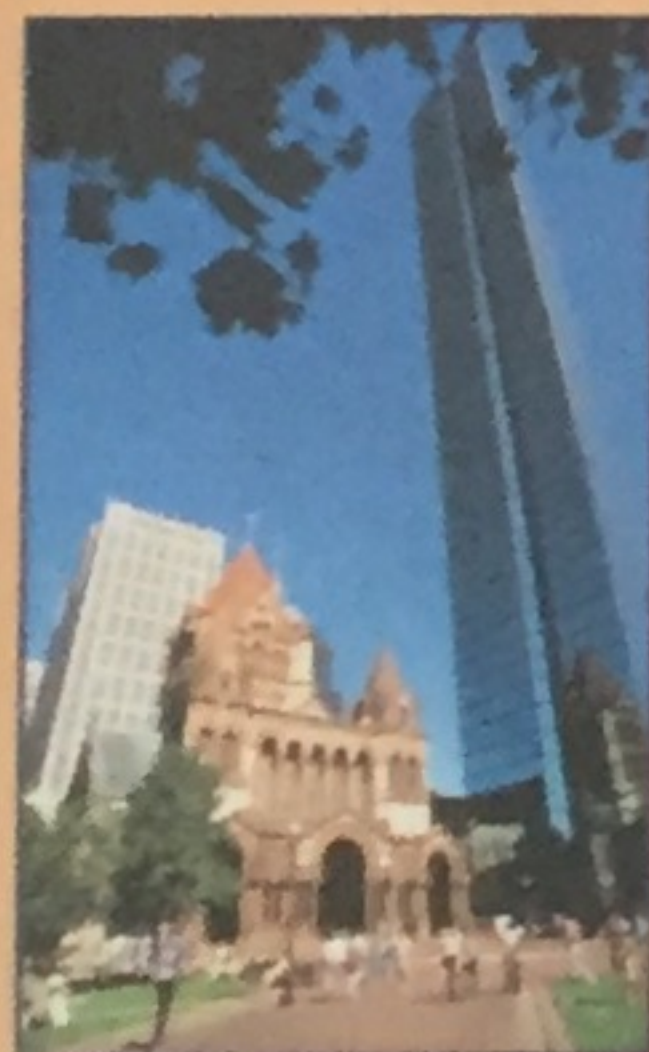
Mary Pugh, University of Toronto, Canada

Michael Shearer, North Carolina State University

Marshall Slemrod, University of Wisconsin, Madison

Register at

**[www.siam.org/meetings/pd06/](http://www.siam.org/meetings/pd06/)**



**Held jointly with:**

**SIAM ANNUAL MEETING**

JULY 10-14, 2006

SIAM Conference on  
**Financial Mathematics  
and Engineering**

Fourth Day Added: Now July 9-12

July 10-12, 2006

**[www.siam.org/meetings/](http://www.siam.org/meetings/)**

**siam**

SOCIETY FOR INDUSTRIAL AND APPLIED MATHEMATICS